



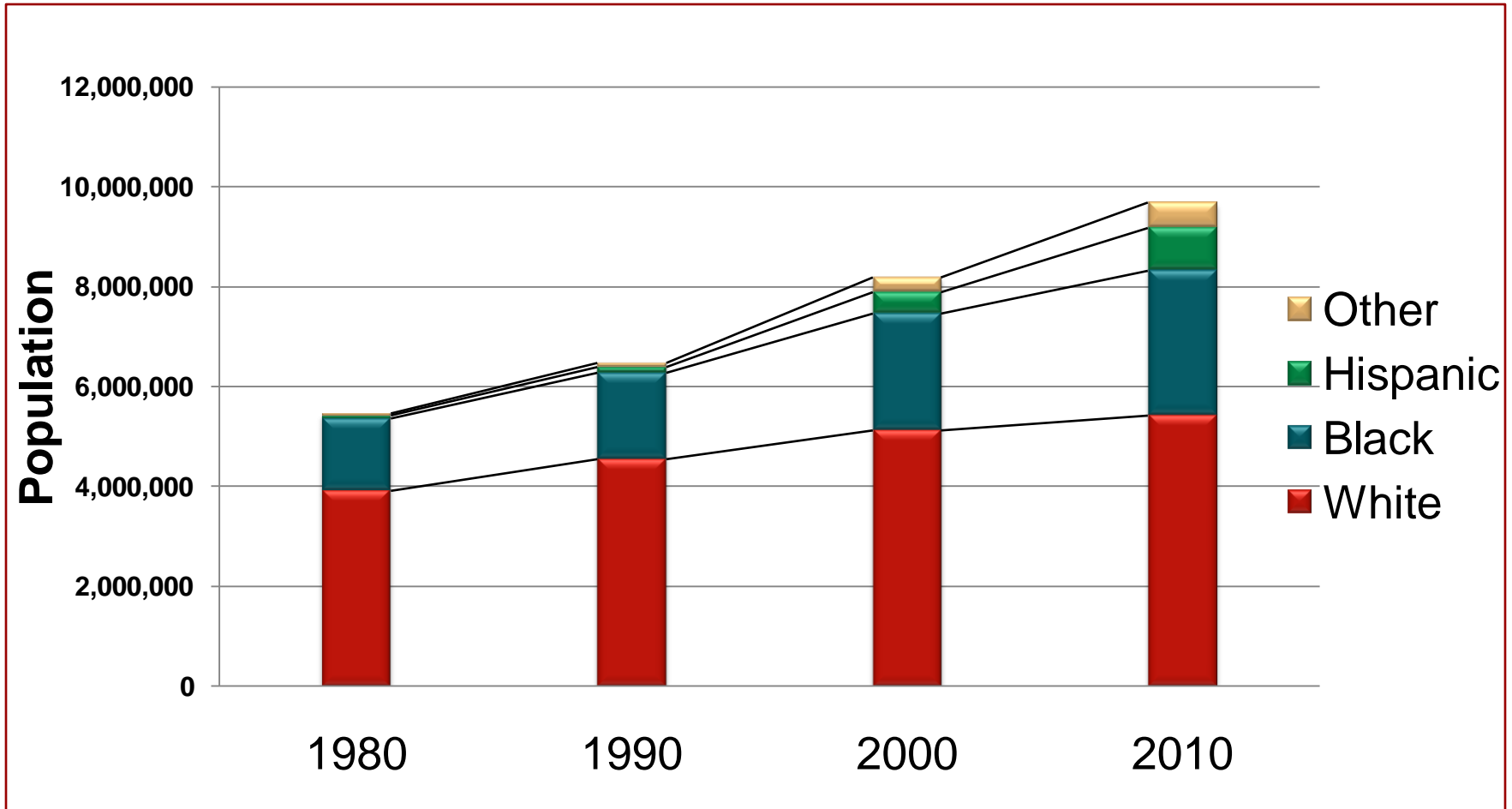
2012 Newly Elected Commissioners Conference

THE CHANGING DYNAMICS OF GEORGIA

Mathew Hauer

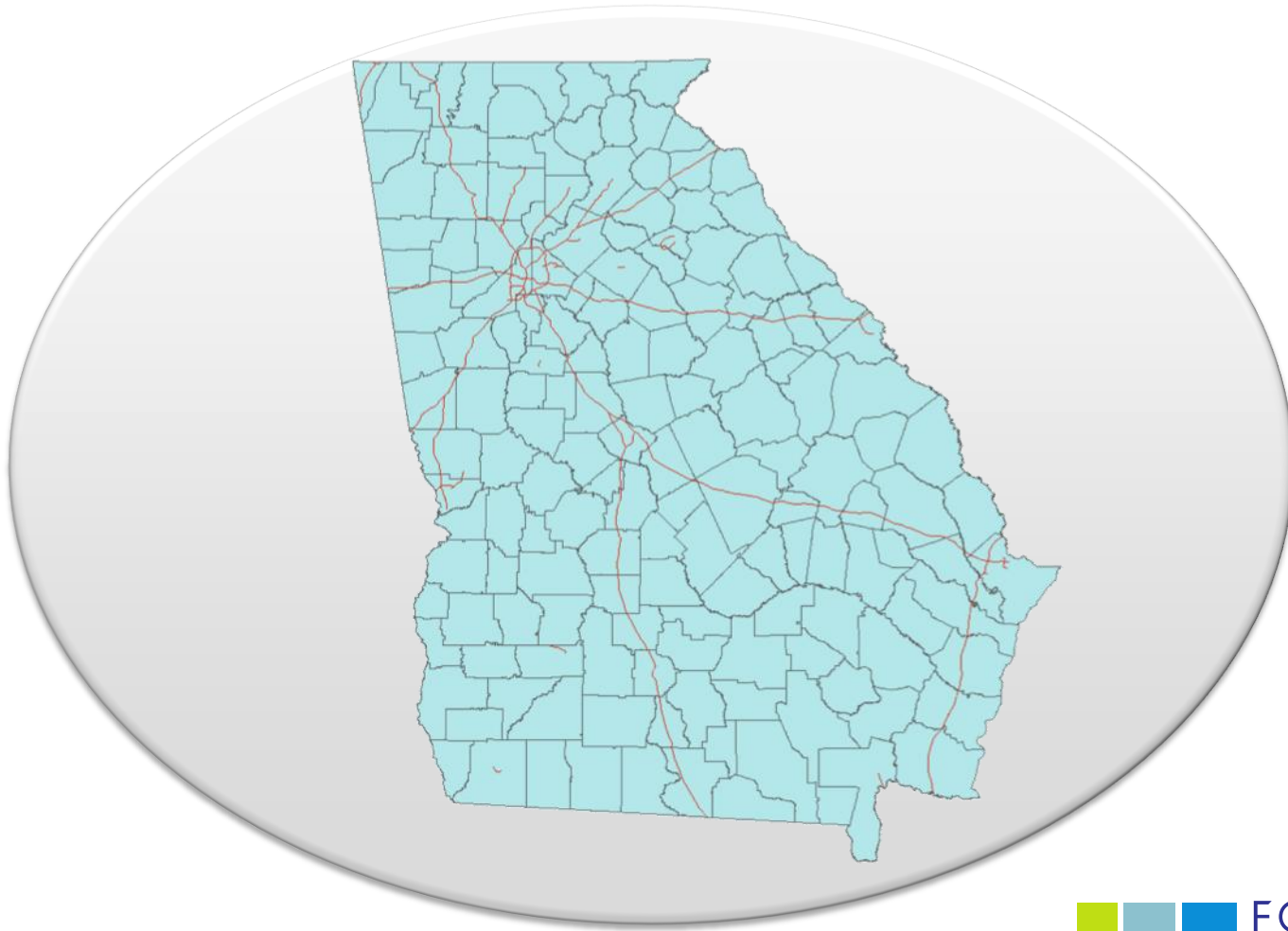
**Public Service Assistant, Carl Vinson Institute of
Government, University of Georgia**

Race and Ethnic Population Change, 1980–2010

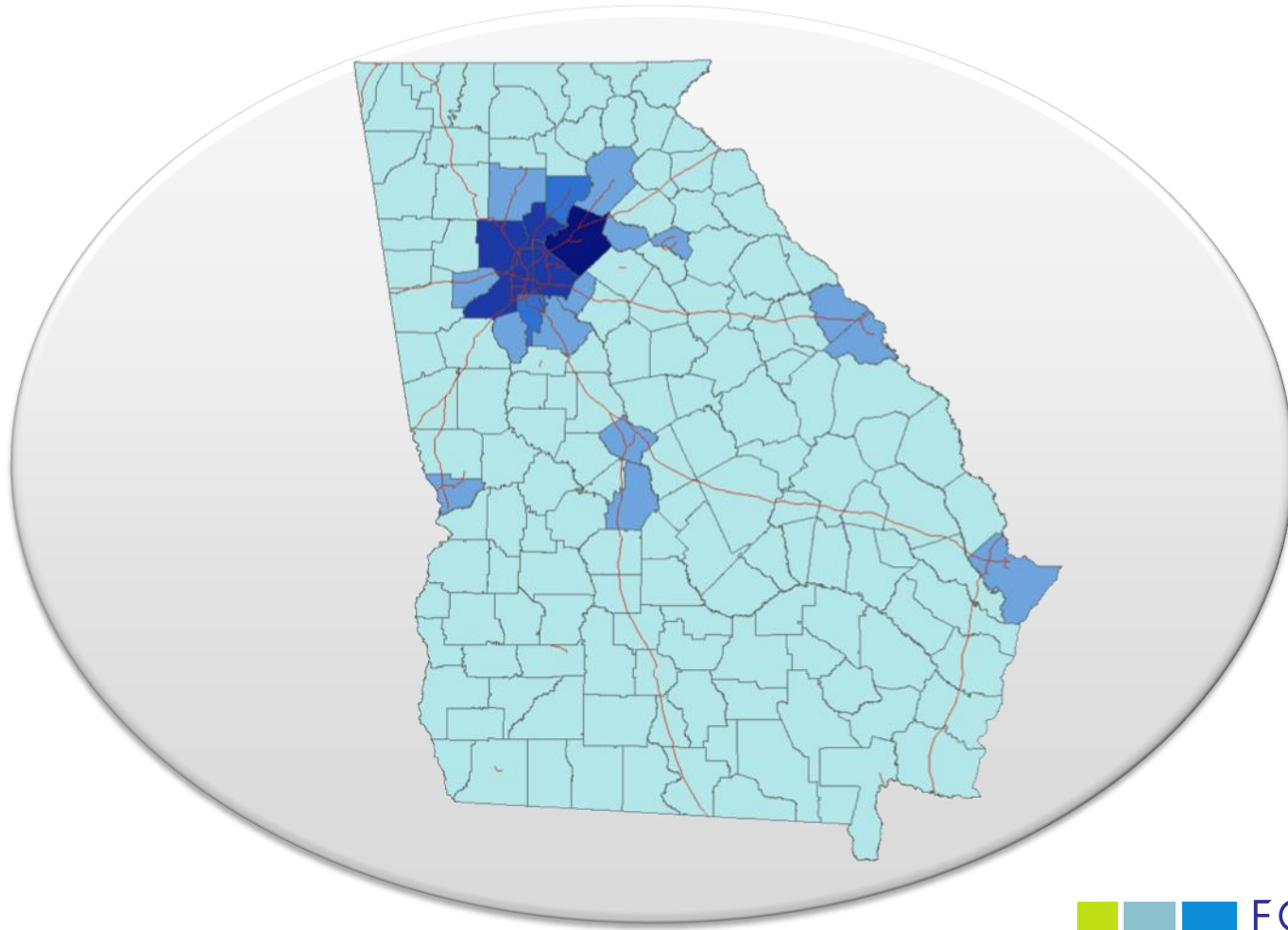


Source: US Census Bureau

Percent of State Asian Population

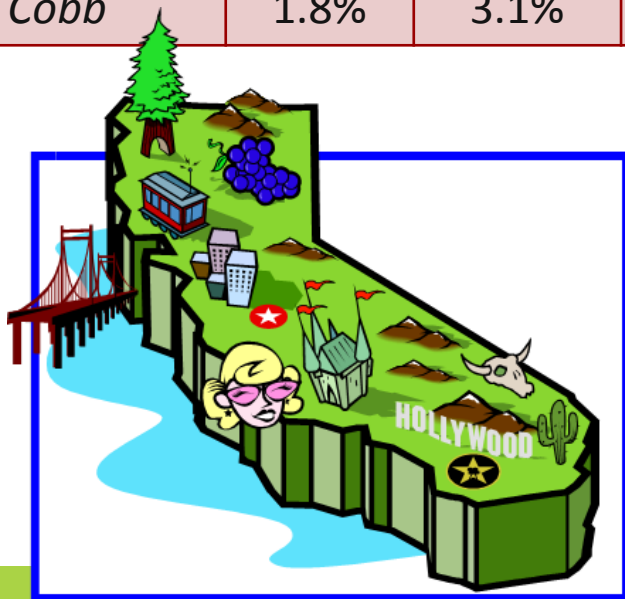


Percent of State Asian Population



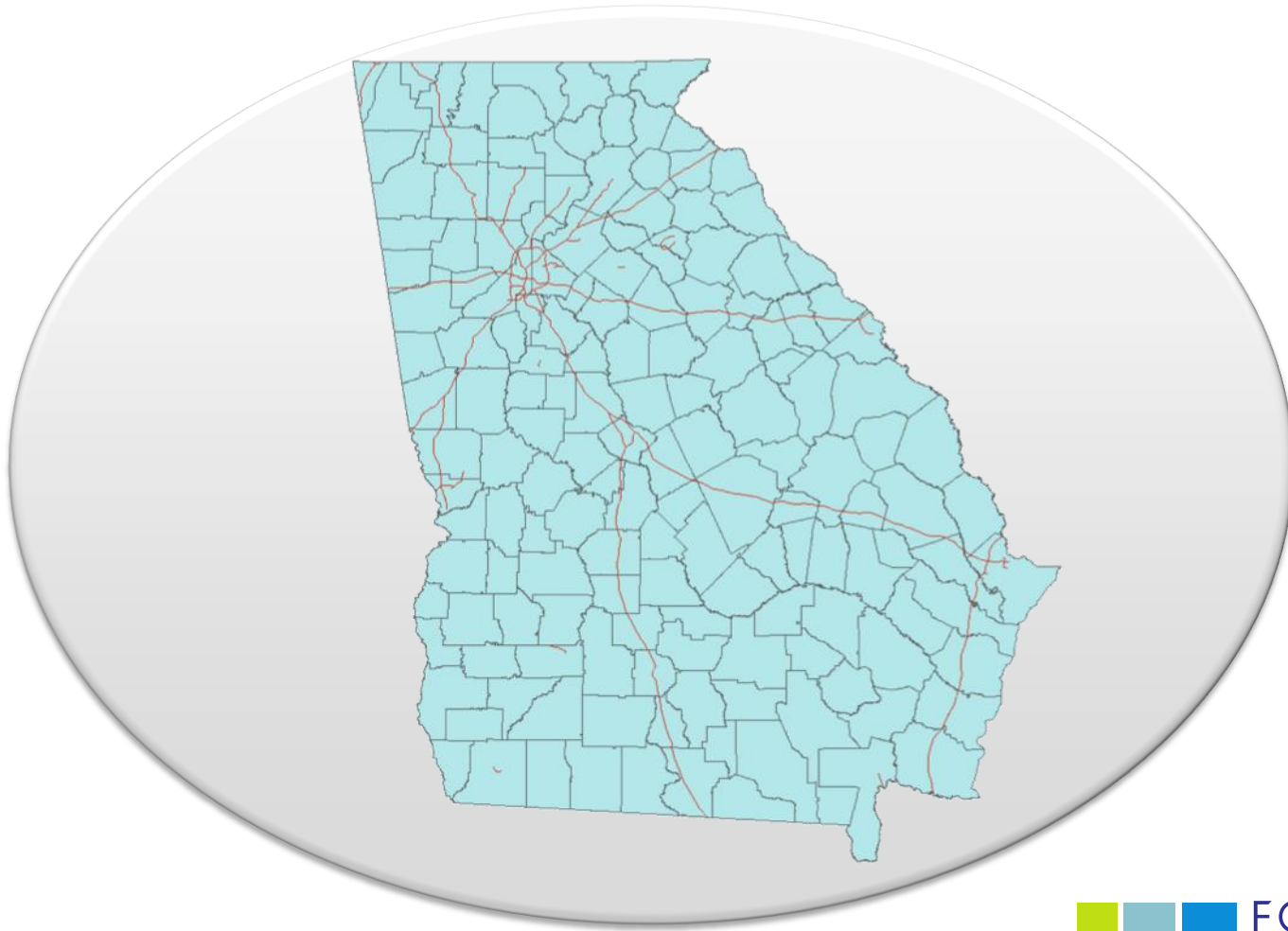
Georgia Is the New California

County	Percent Asian			Percent Change 1990-2010
	1990	2000	2010	
Henry	0.6%	1.8%	3.0%	475%
Gwinnett	2.9%	7.2%	10.7%	369%
Fulton	1.3%	3.0%	5.6%	519%
Cobb	1.8%	3.1%	4.5%	291%

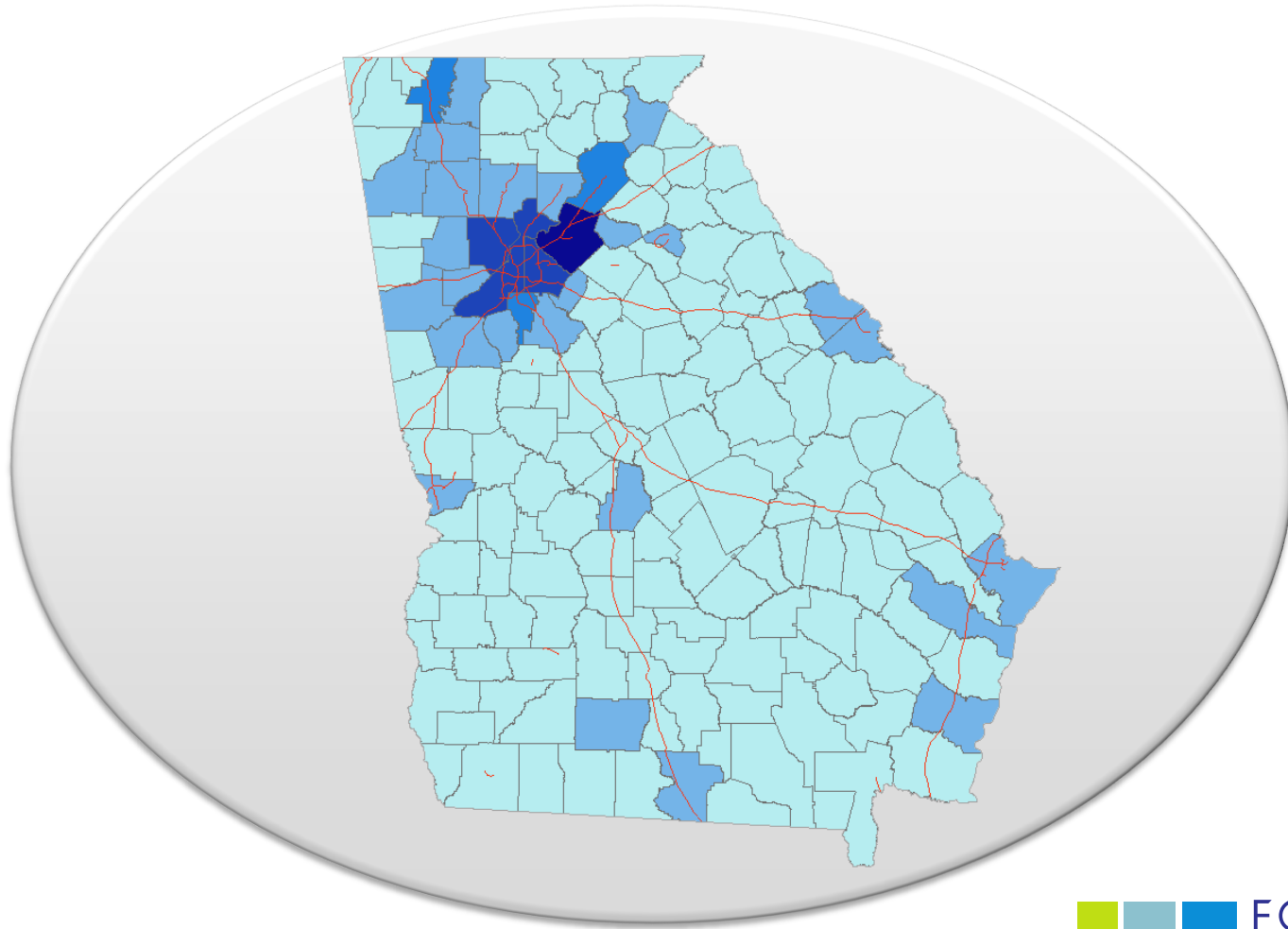


Henry County is one of the four fastest growing counties in the U.S.

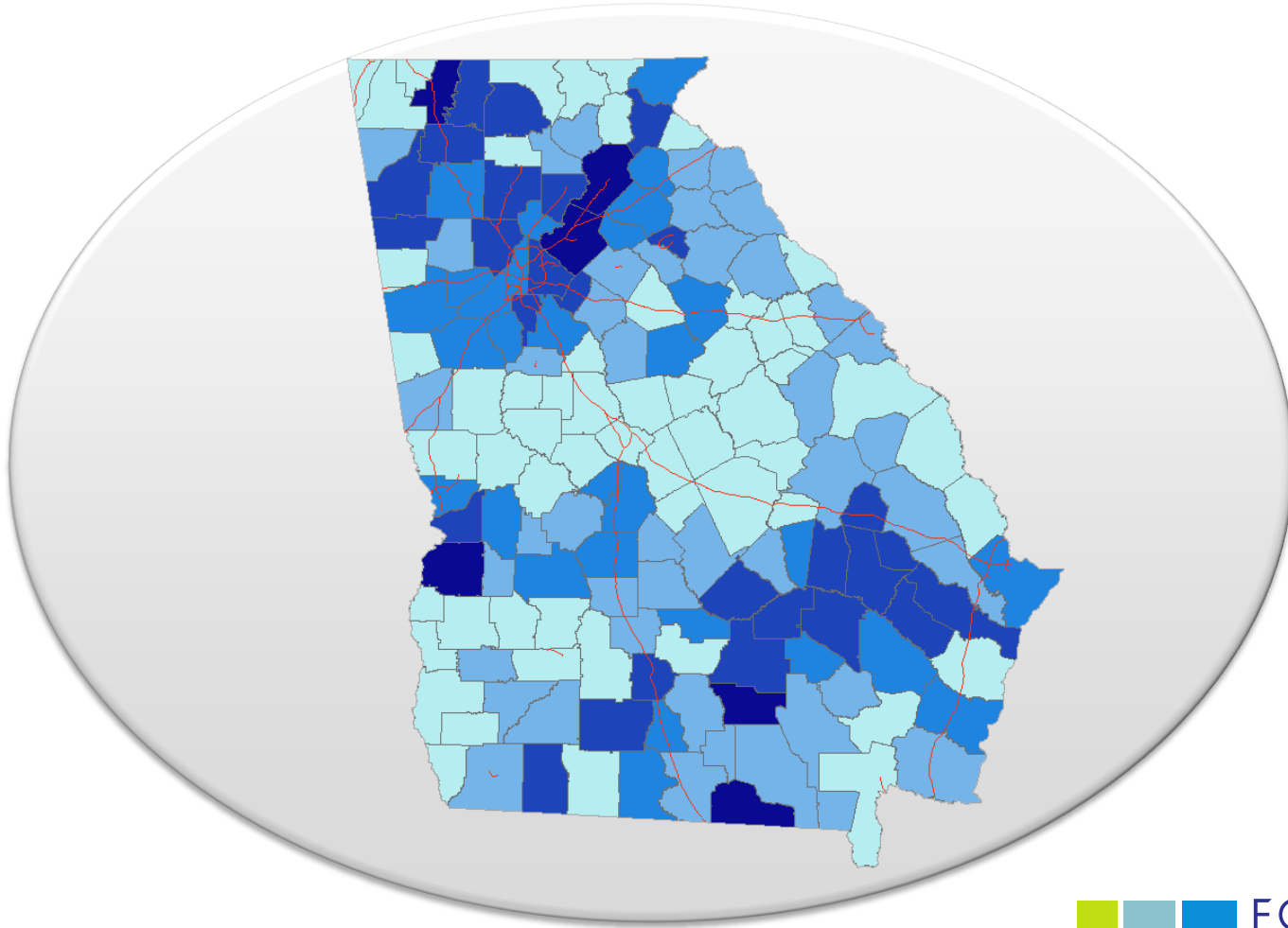
Percent of State Hispanic Population



Percent of State Hispanic Population



Percent of Hispanic Population by County



Top 6 Industries for Hispanics

	% of Working Hispanics
Construction	
Restaurants	
Landscaping	
Carpet Industry	
Slaughterhouses	
Crop Production	

Source: US Census Bureau

Top 6 Industries for Hispanics

	% of Working Hispanics
Construction	26.0%
Restaurants	9.0%
Landscaping	3.5%
Carpet Industry	3.1%
Slaughterhouses	2.2%
Crop Production	2.0%

Source: US Census Bureau

Growth, 2000–2010

	Number Change
White	285,259
Black	579,335
Other	218,144
Hispanic	418,462

Source: US Census Bureau

Growth, 2000–2010

	Number Change	Percent Change
White	285,259	5.6%
Black	579,335	24.8%
Other	218,144	74.9%
Hispanic	418,462	96.1%

Source: US Census Bureau

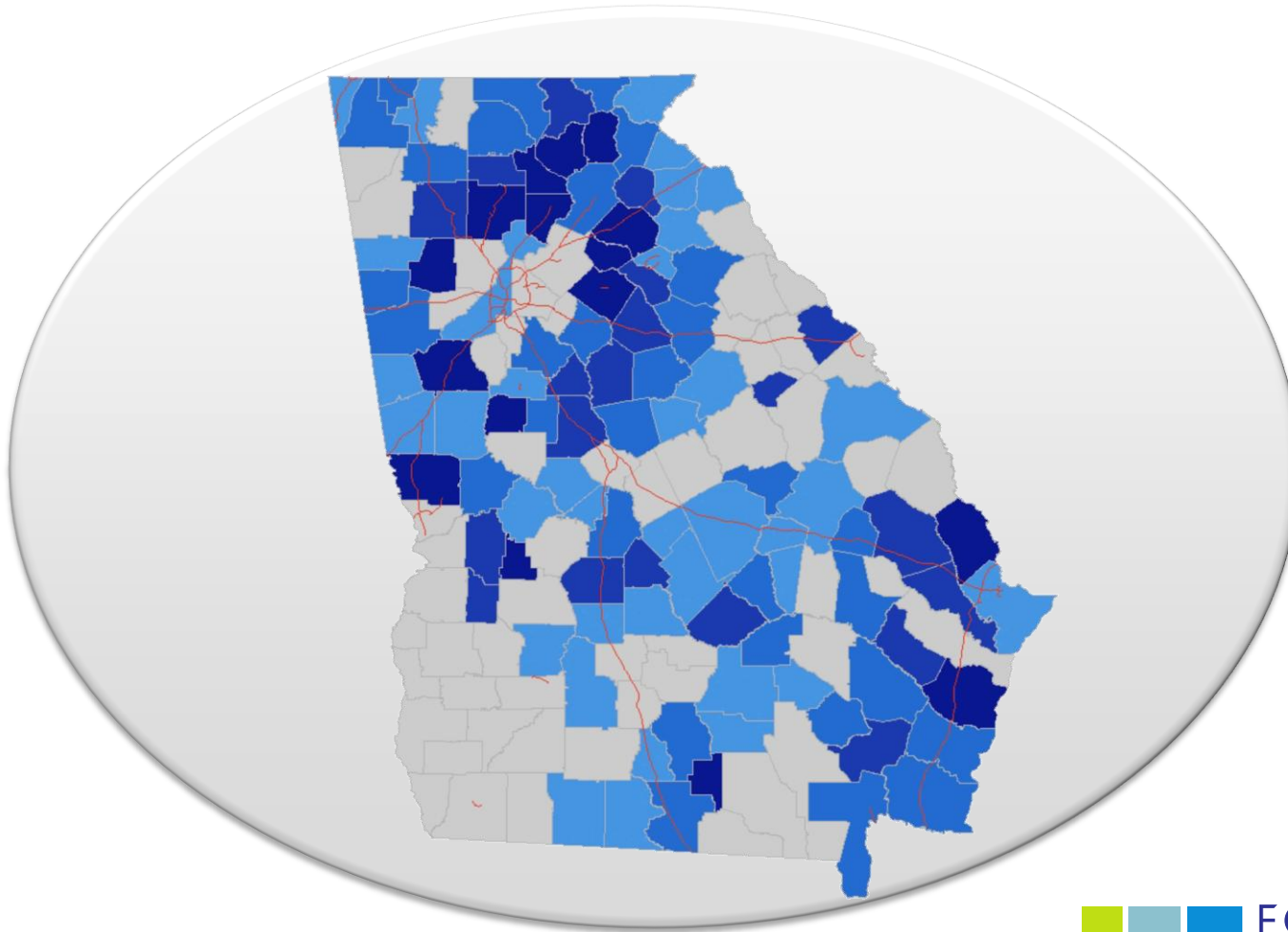
Growth, 2000–2010

	Number Change	Percent Change	Annual Growth Rate	Doubling Time
White	285,259	5.6%	0.6%	116.67 years
Black	579,335	24.8%	2.5%	28 years
Other	218,144	74.9%	6.4%	10.94 years
Hispanic	418,462	96.1%	7.8%	8.97 years

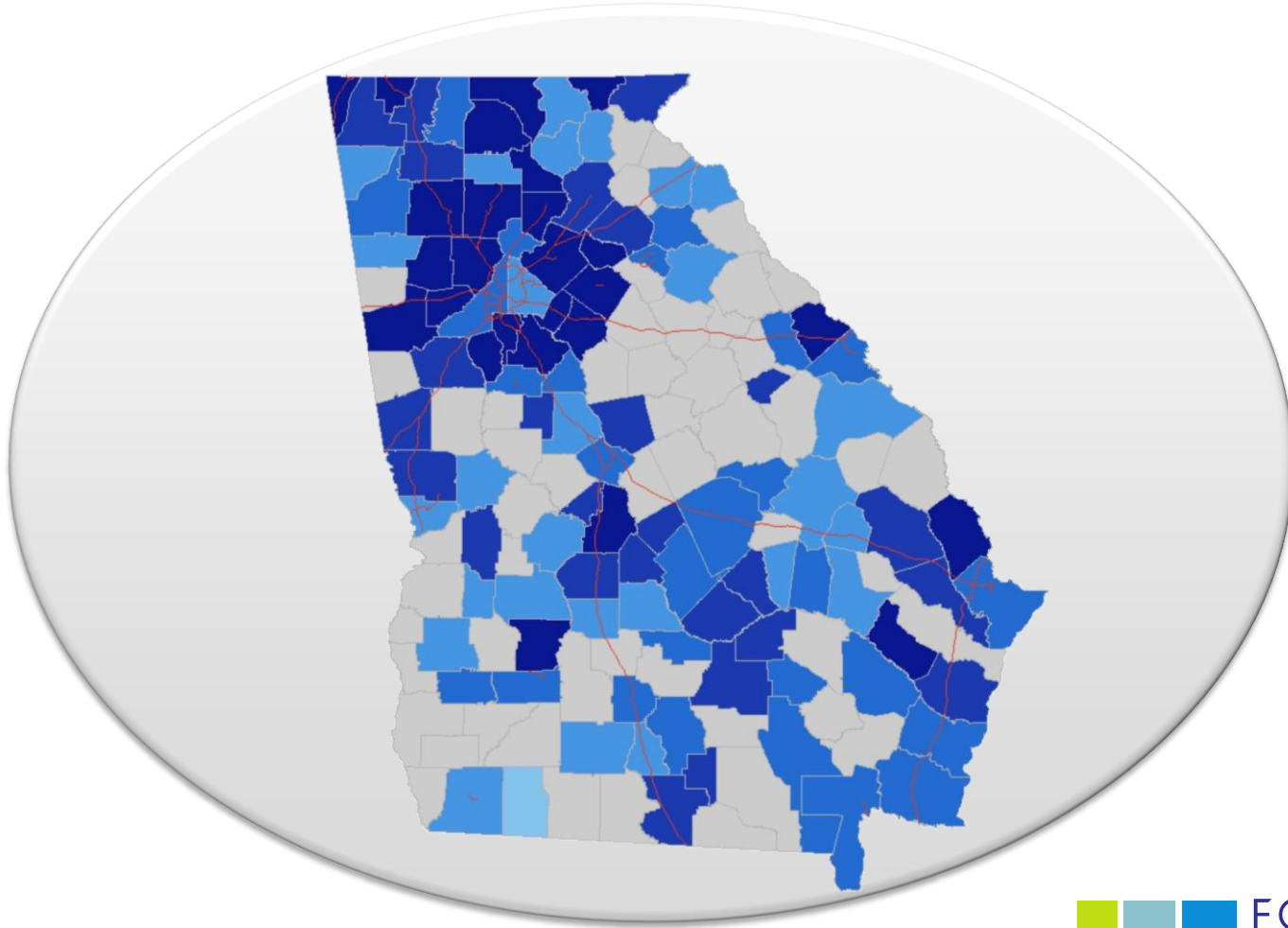


Source: US Census Bureau

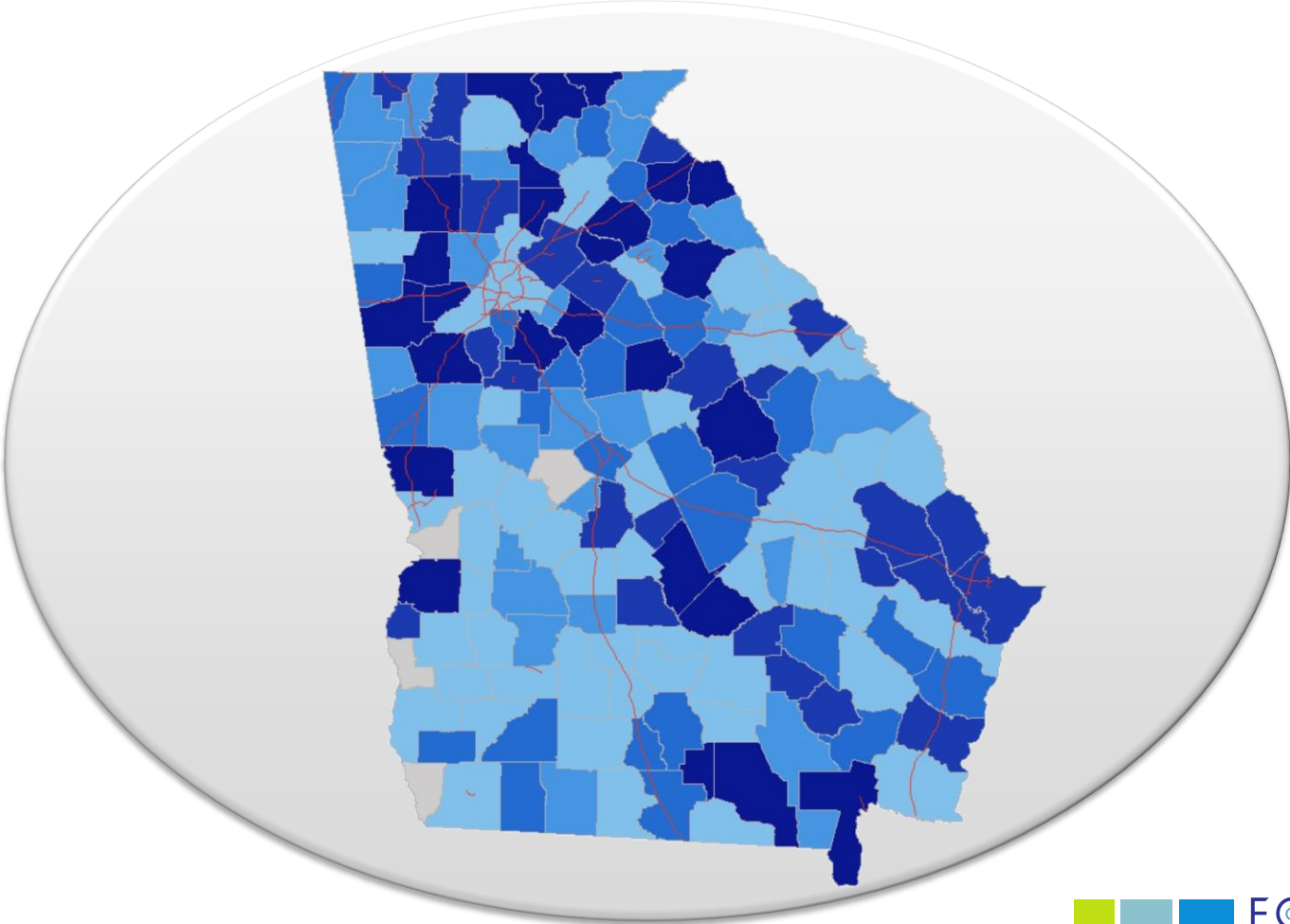
Change in White Population, 2000–2010

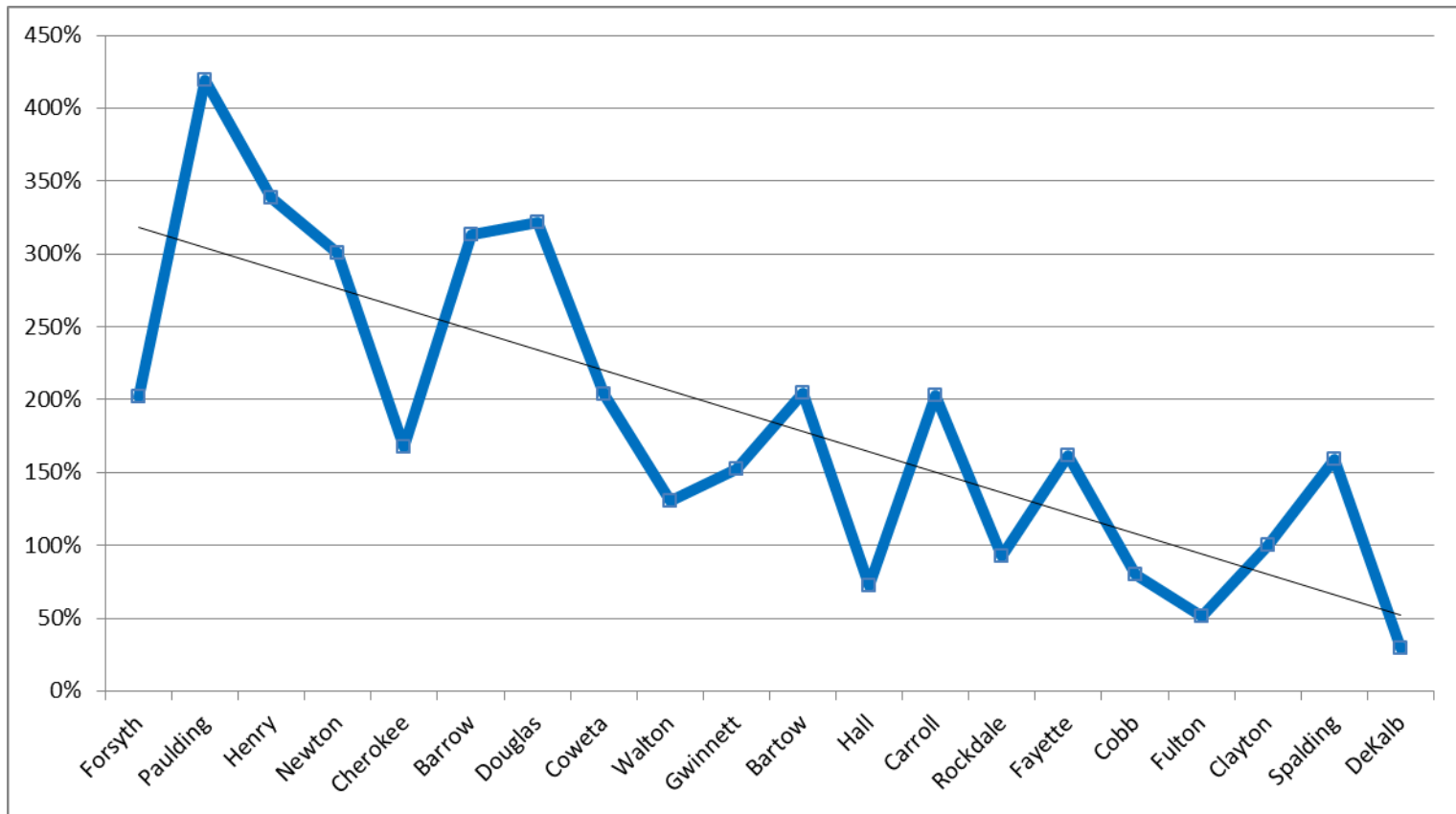


Change in Black Population, 2000–2010

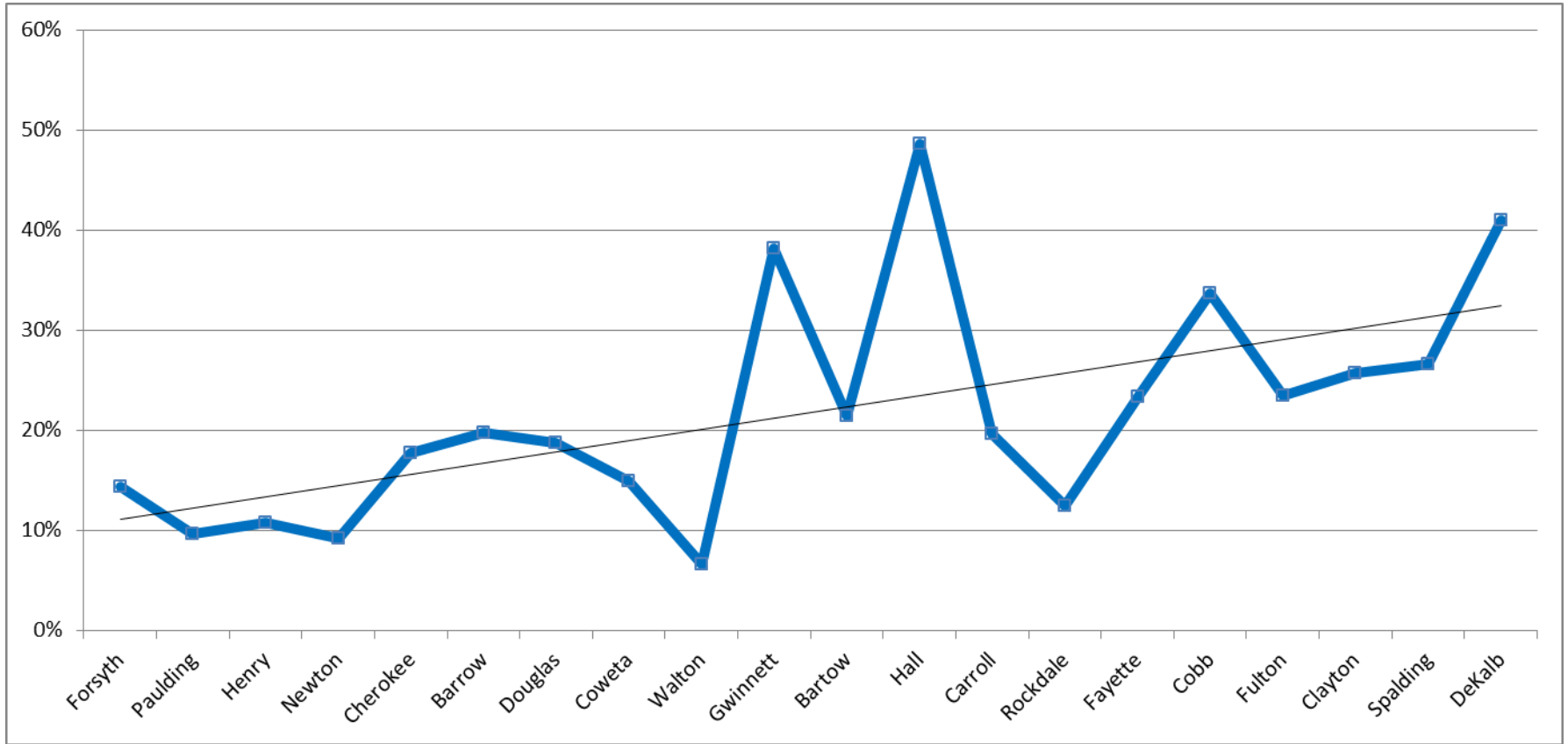


Change in Hispanic Population, 2000–2010



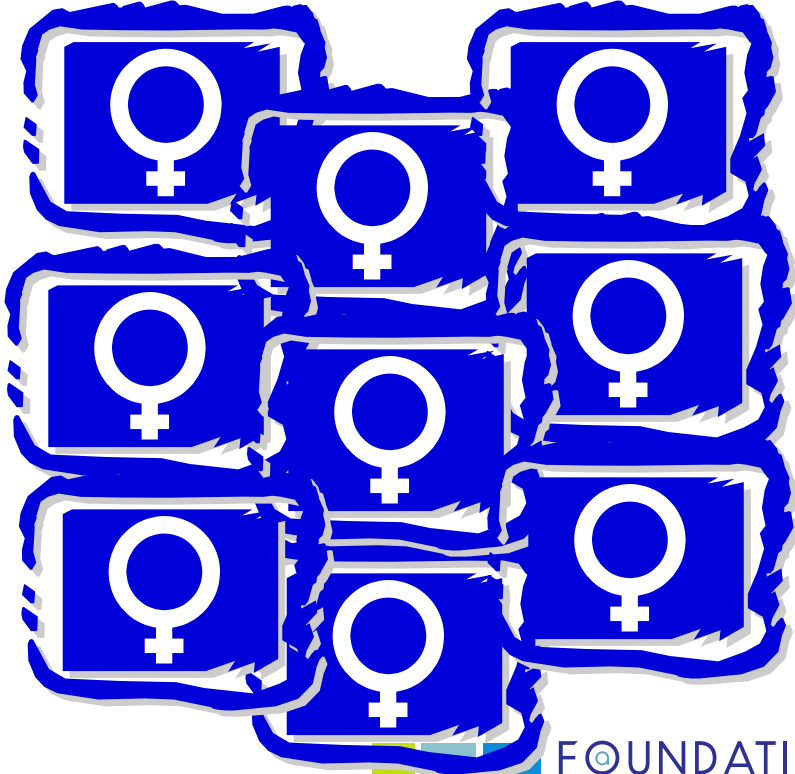


- **Fast growth = Fast Hispanic growth**
- **2000–2010**



- **Slow growth = Larger proportions due to Hispanic growth**

Where Do Babies Come From?



Total Fertility Rate, 2000

	Total Fertility Rate
Statewide	2.13



Source: GA Vital Statistics



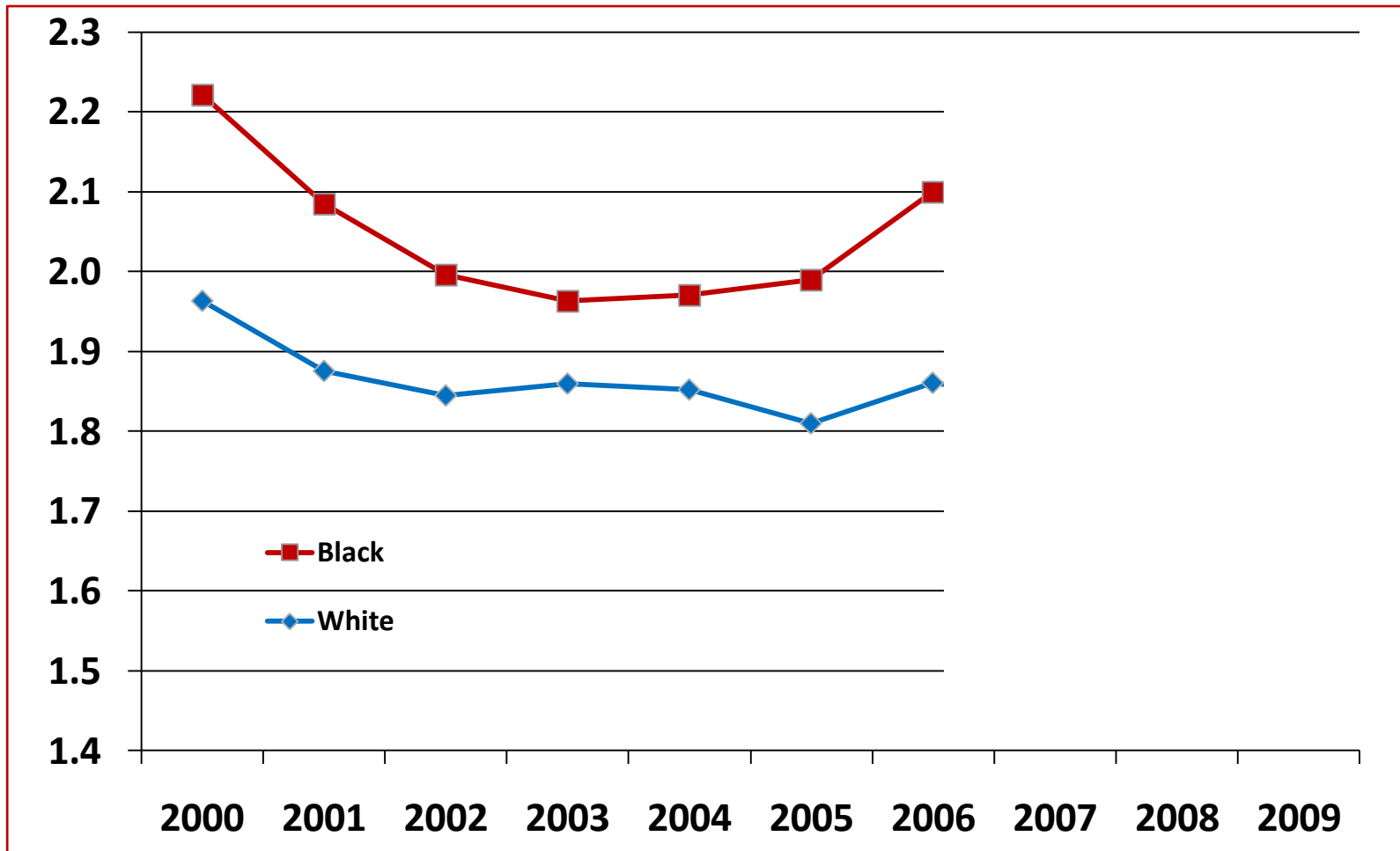
Total Fertility Rate, 2000

	Total Fertility Rate
Statewide	2.13
White	1.96
Black	2.22
Other	1.44
Hispanic	3.53



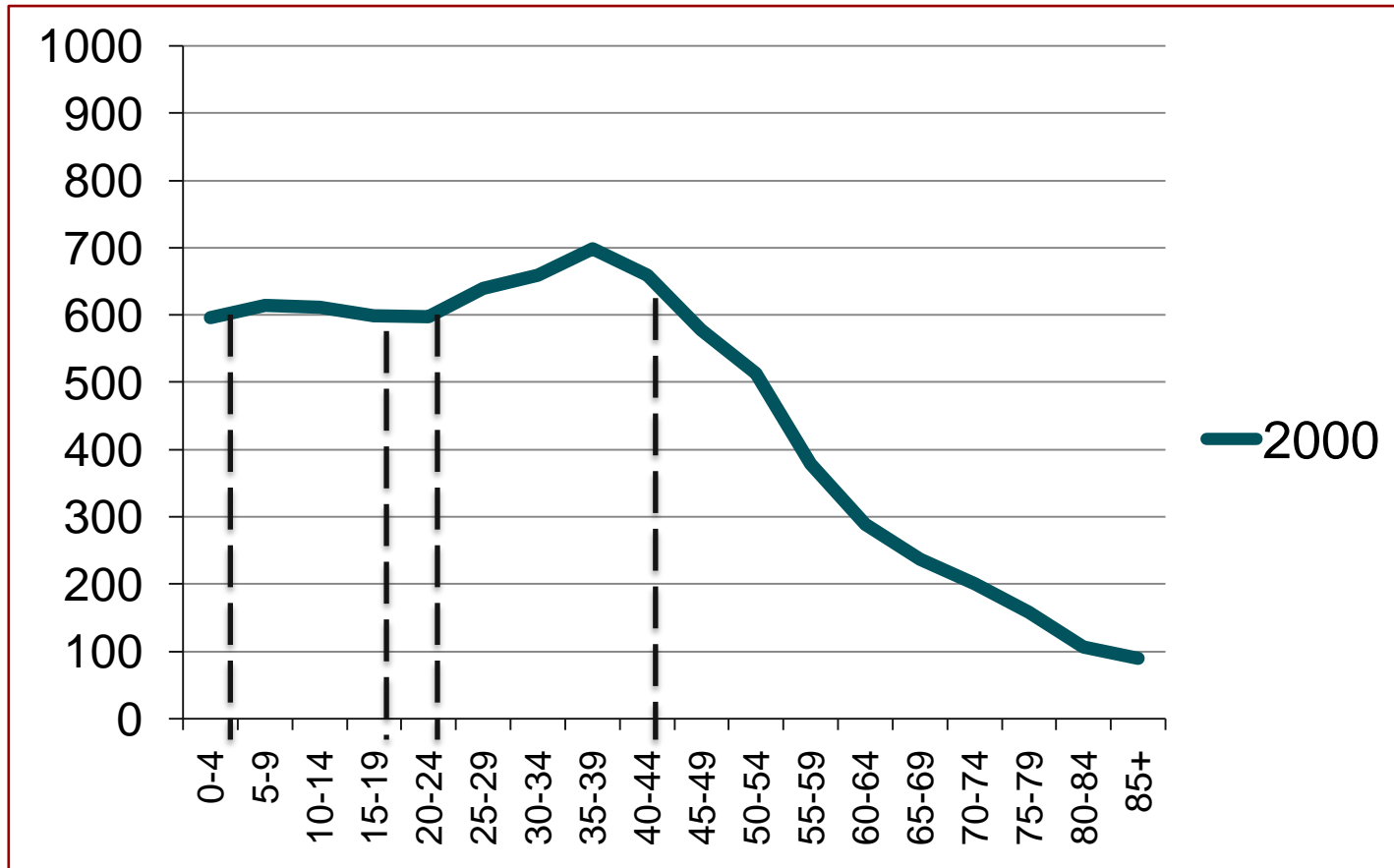
Source: GA Vital Statistics

Total Fertility Rates 2000–2009

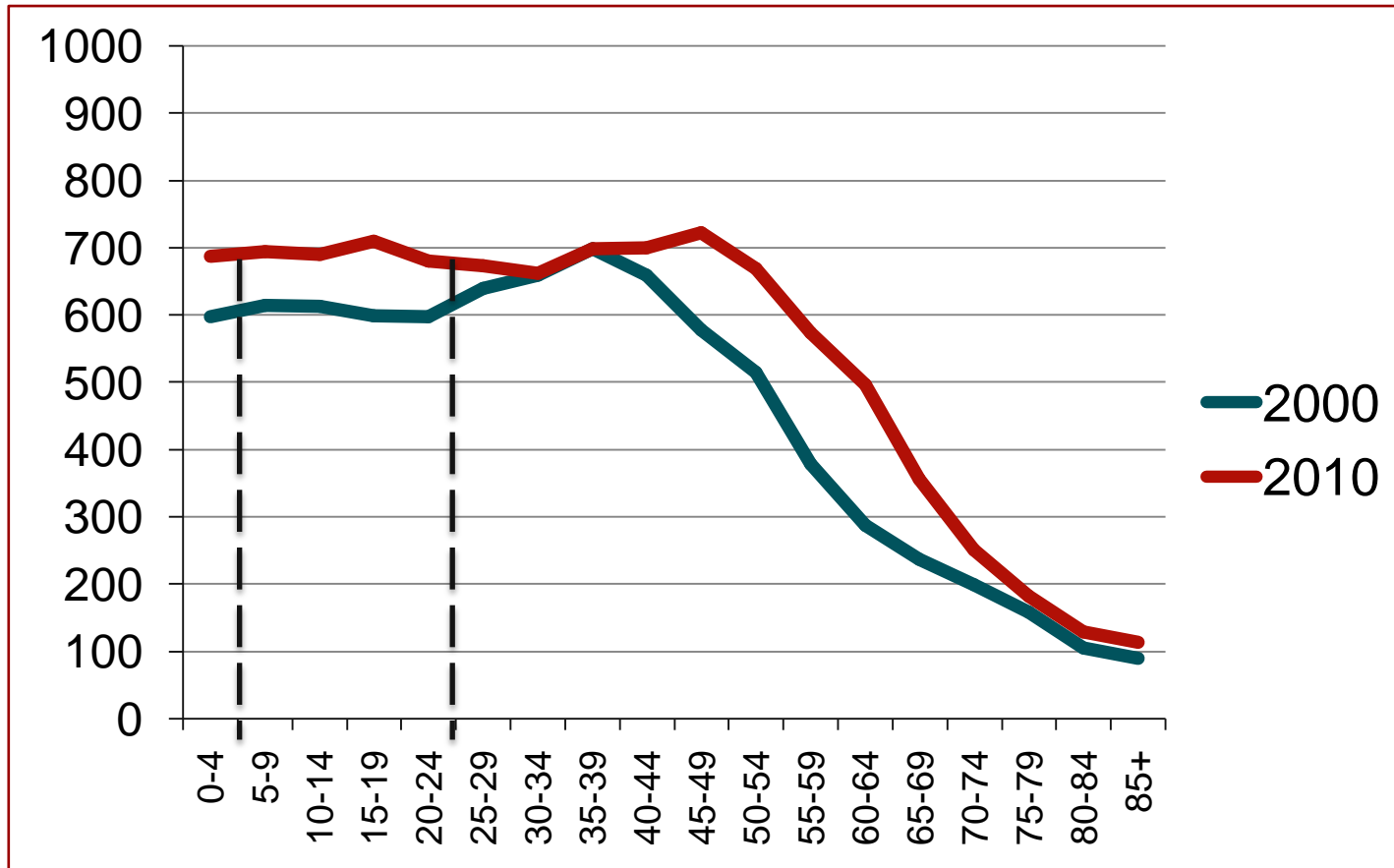


Source: Internal Estimates

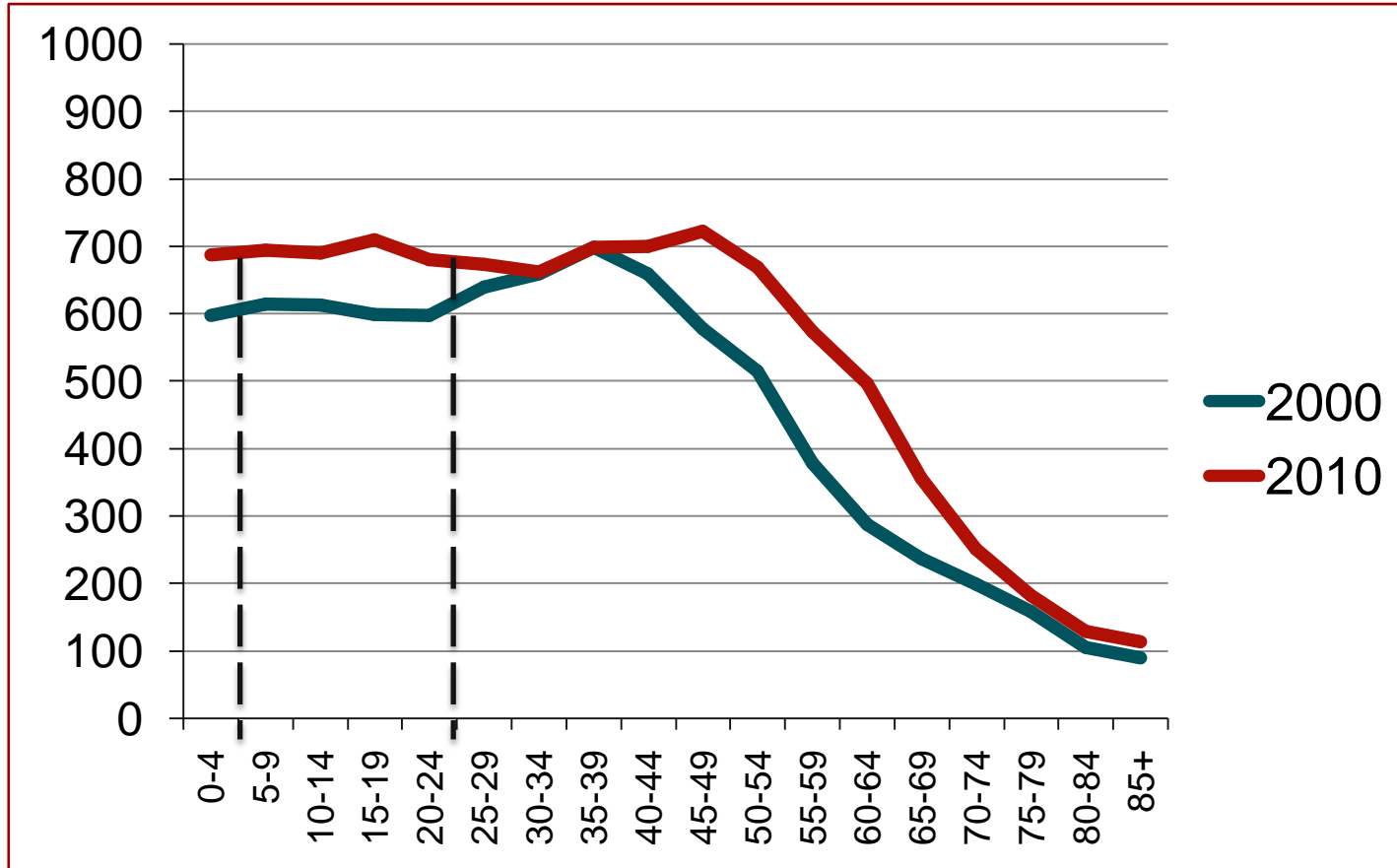
Age Distribution



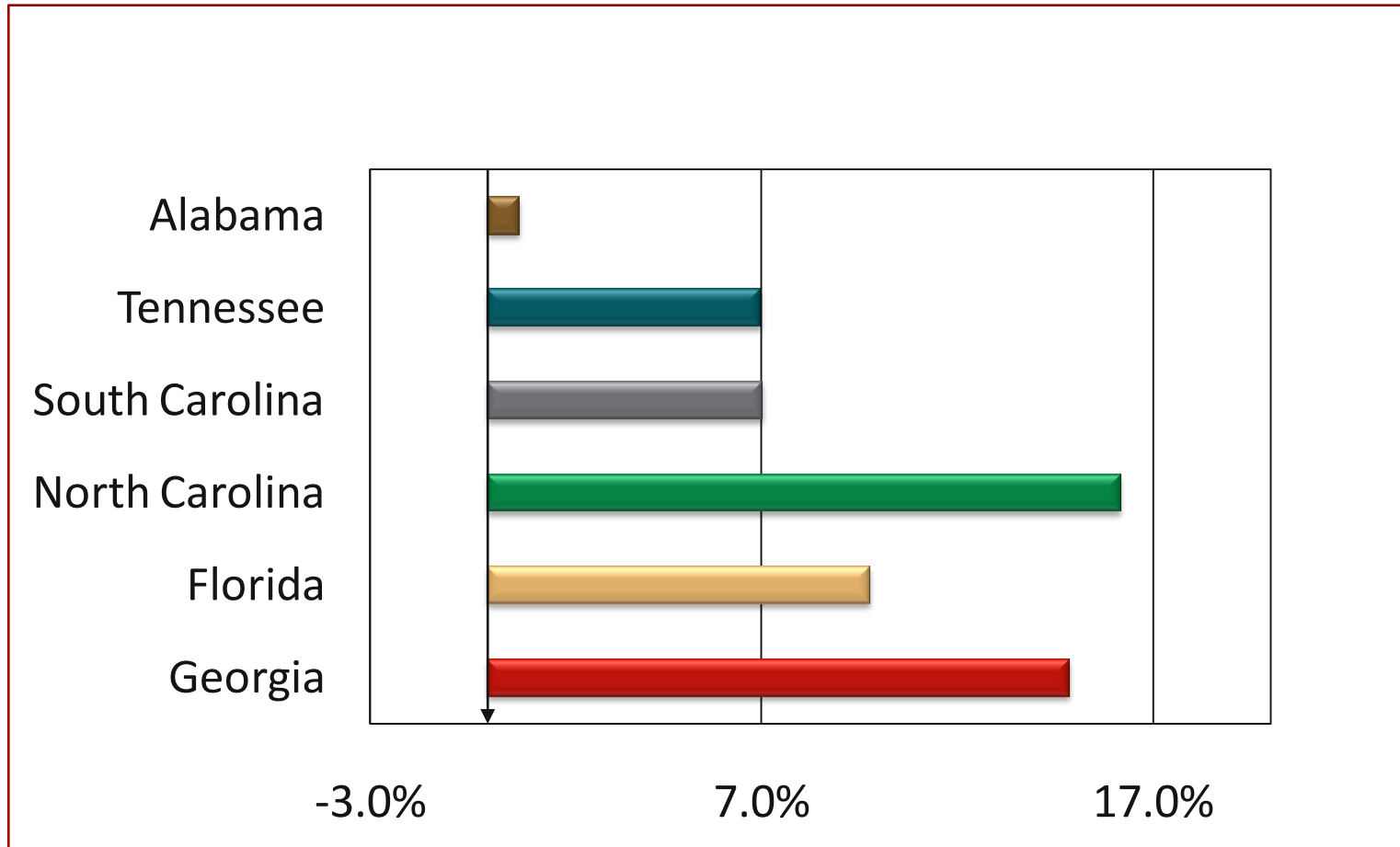
Age Distribution



Age Distribution



Percent Change in Population Under 18, 2000–2010



Source: US Census Bureau

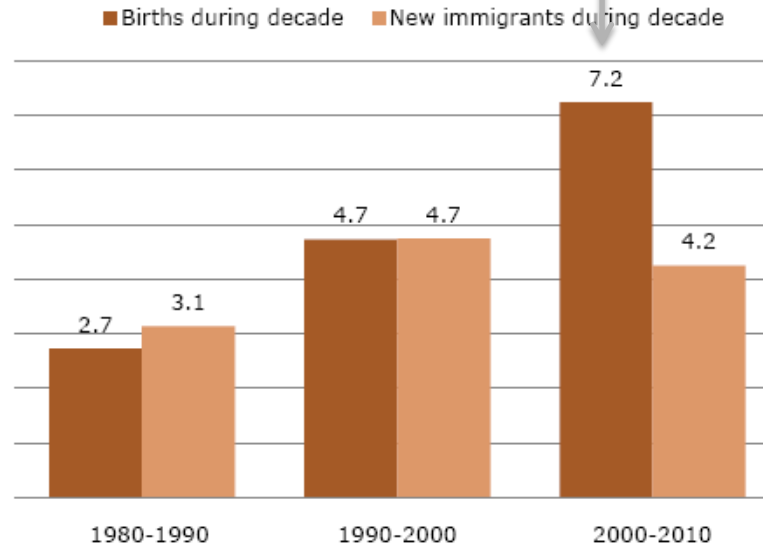
The Mexican-American Boom: Births Overtake Immigration

Births have surpassed immigration as the main driver of the dynamic growth in the U.S. Hispanic population. This new trend is especially evident among the largest of all Hispanic groups—Mexican-Americans,¹ according to a new analysis of U.S. Census Bureau data by the Pew Hispanic Center, a project of the Pew Research Center.

In the decade from 2000 to 2010, the Mexican-American population grew by 7.2 million as a result of births and 4.2 million as a result of new immigrant arrivals. This is a change from the previous two decades when the number of

Figure 1

Mexican-American Population Growth, 1980-2010 (millions)



Note: Deaths are not included in the figure.

Source: For 2000-2010, Pew Hispanic Center tabulations of March 2010 and March 2000 Current Population Surveys adjusted for omissions. For 1980-1990 and 1990-2000, Pew Hispanic Center tabulations based on 1980 to 2000 Census Integrated Public Use Micro Samples (IPUMS).

PEW RESEARCH CENTER

Source: Pew Hispanic Center