

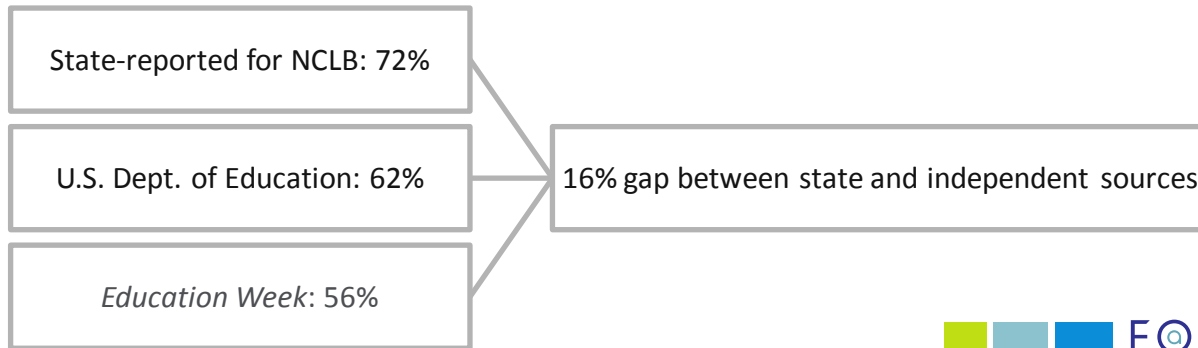
# THE CHANGING DYNAMICS OF GEORGIA

**Mathew Hauer**

**Public Service Assistant, Carl Vinson Institute of  
Government, University of Georgia**

# Educational Attainment

- National graduation rate is 69%.
- 64,100 students did not graduate high school in 2009.

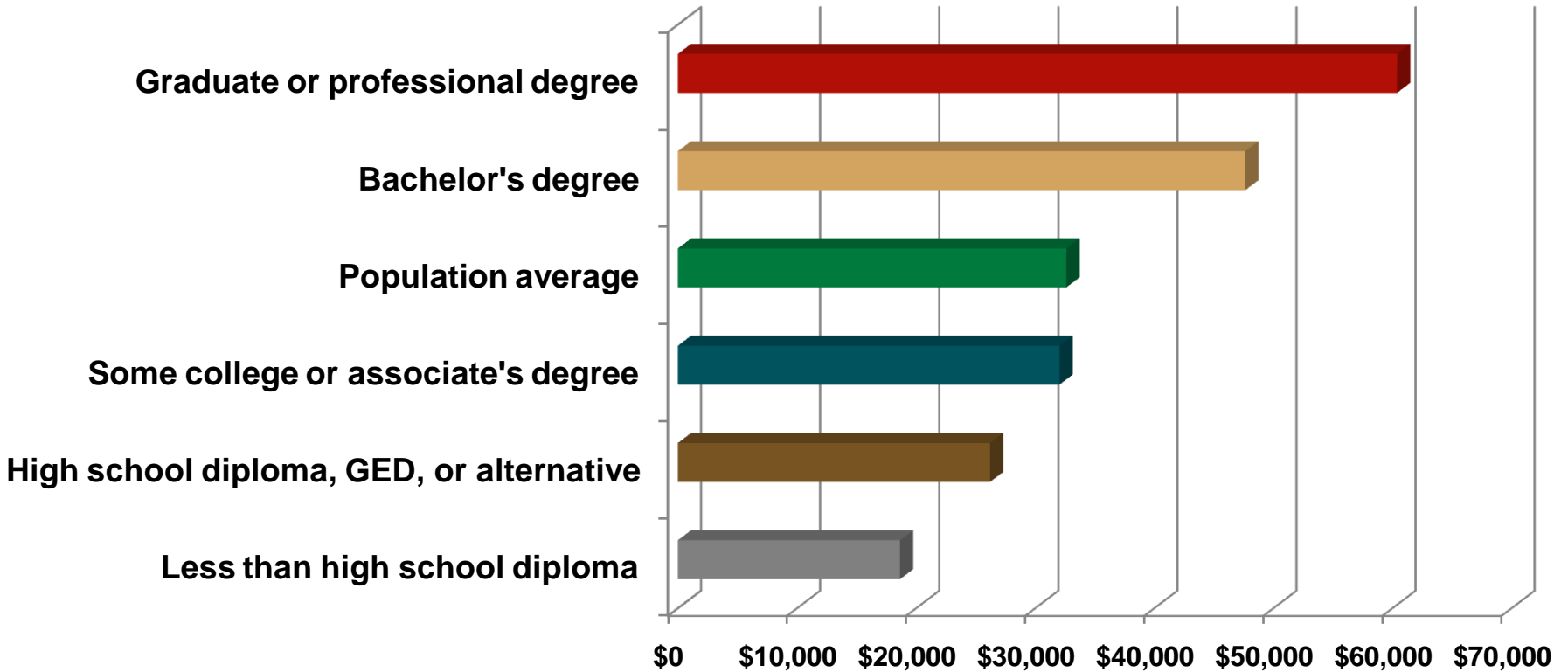


# Educational Attainment

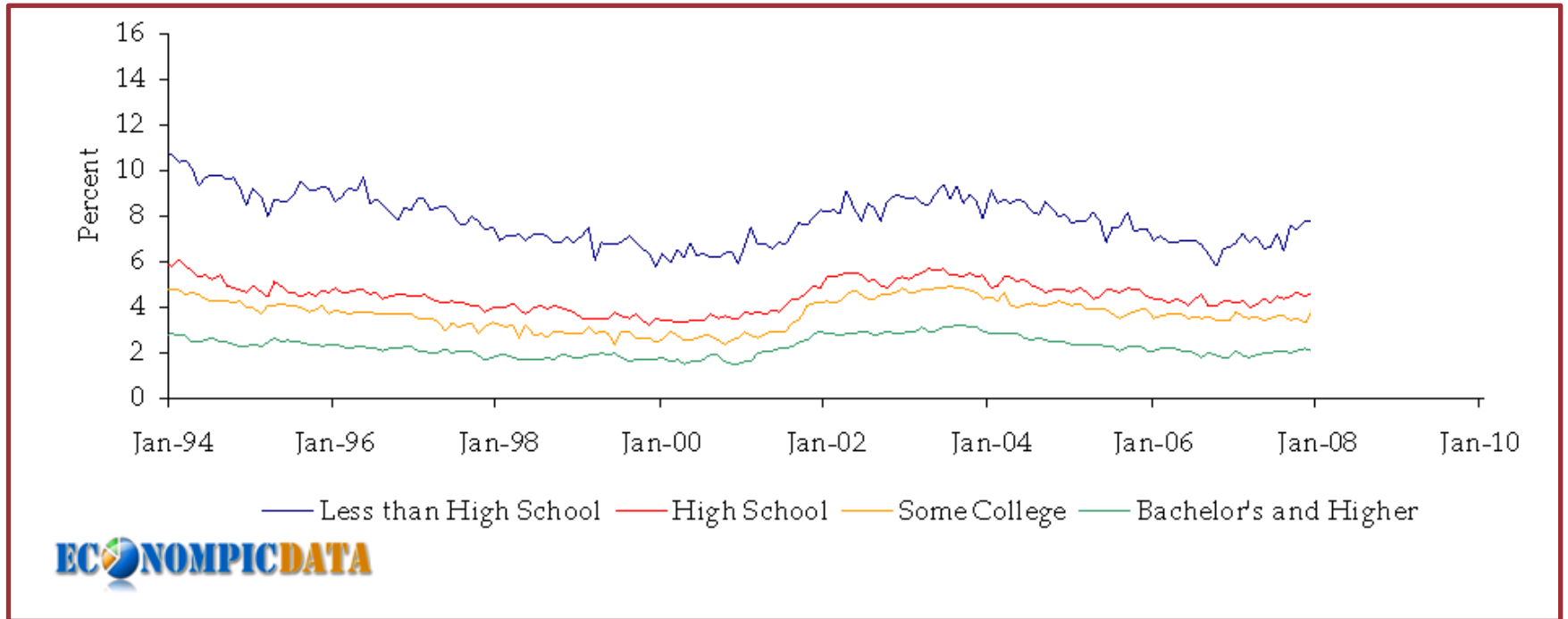
**Below poverty level, population aged 25 and older, 2007–2009**

	% below poverty	% in educational group
Less than high school diploma	39%	28%
High school diploma, GED, or alternative	34%	14%
Some college or associate's degree	19%	8%
Bachelor's degree	6%	4%
Graduate or professional degree	2%	3%

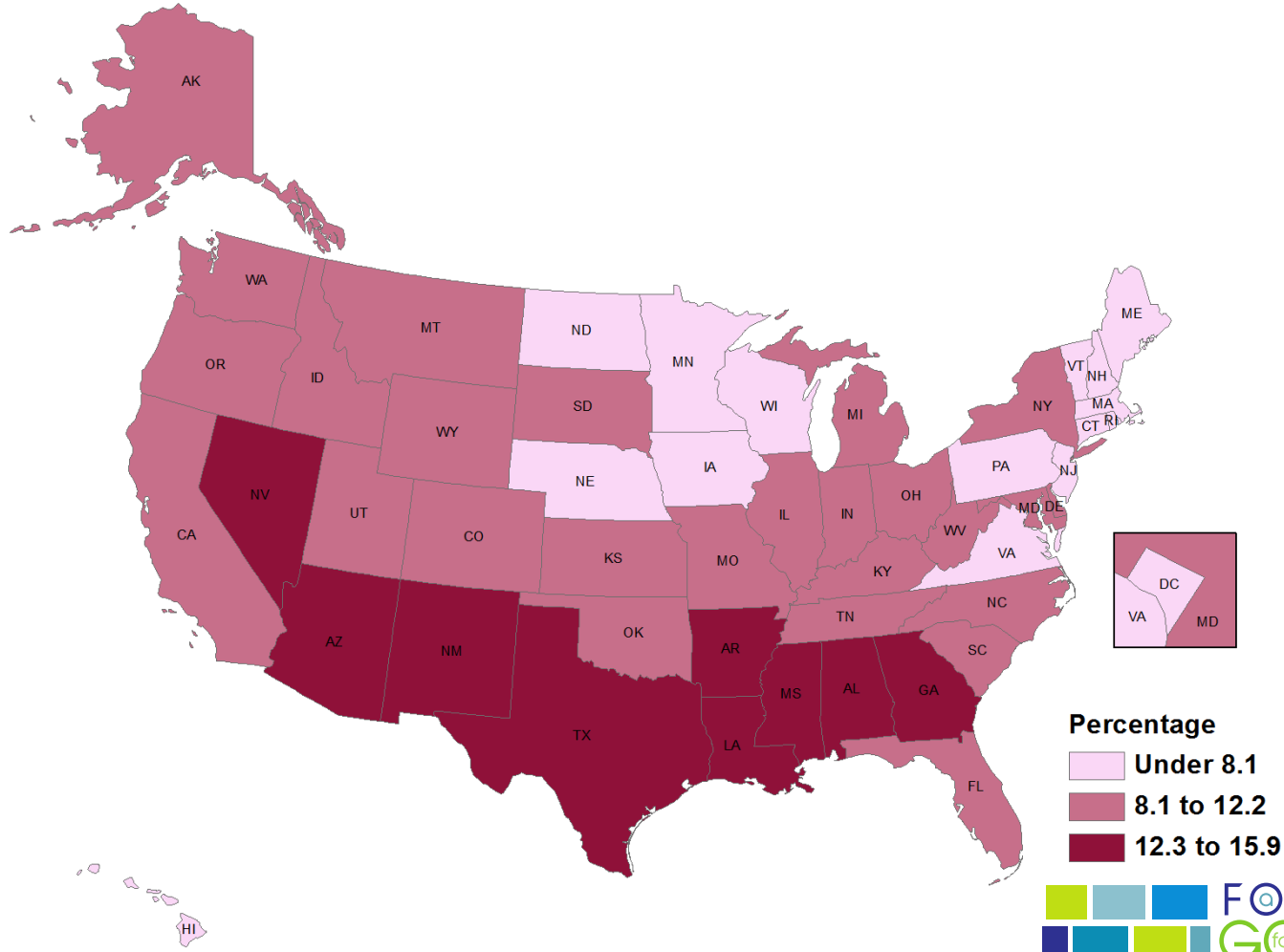
# Median Income by Educational Attainment



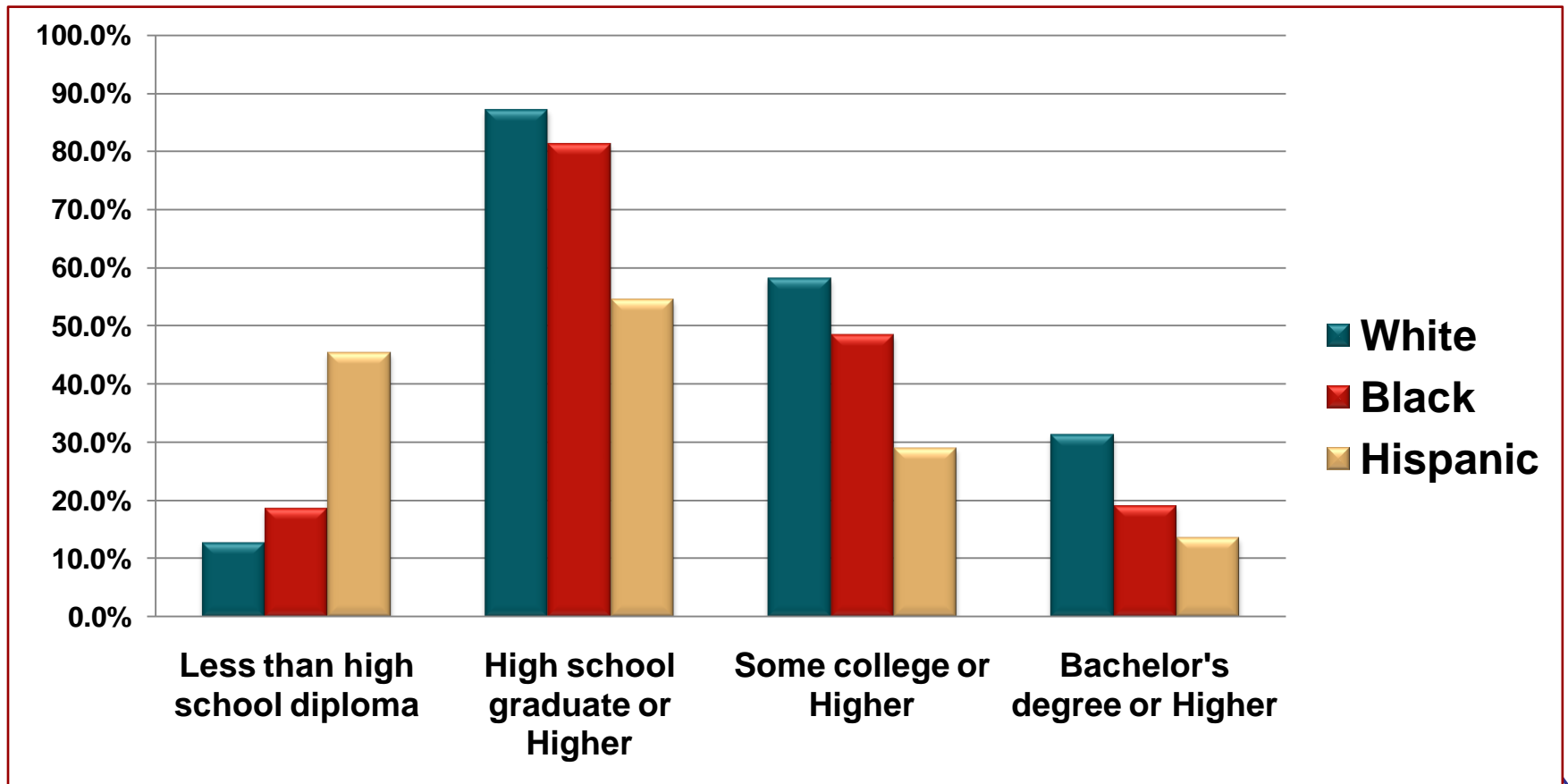
# Unemployment by Educational Attainment



# Percent Aged 18–24 Not Enrolled and Not Having a High School Diploma or Equivalent, 2008–2010



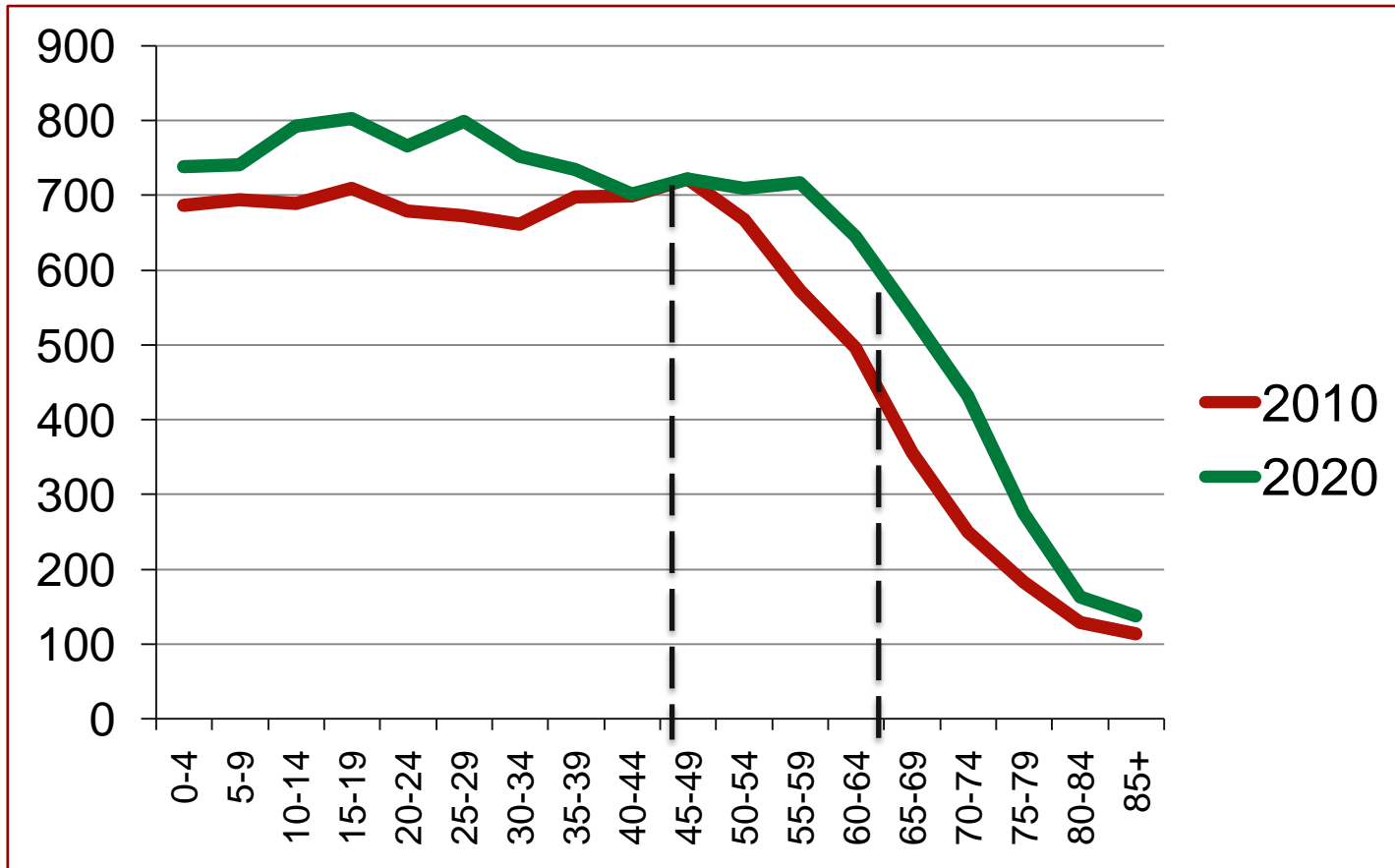
# Educational Attainment, Population Aged 25 and Older, 2007–2009





**Georgia has the 5<sup>th</sup>-largest prison population in the U.S.**

# Age Distribution



# Population Change 1990–2010

	<b>% Increase 1990-2010</b>
Under 25	51%
25–44	25%
45–64	111%
65–80	53%
80+	76%

Source: US Census Bureau

# Mock Projection

	1990
5–24	2.0
25–44	2.2
45–64	1.2
65–80	0.6

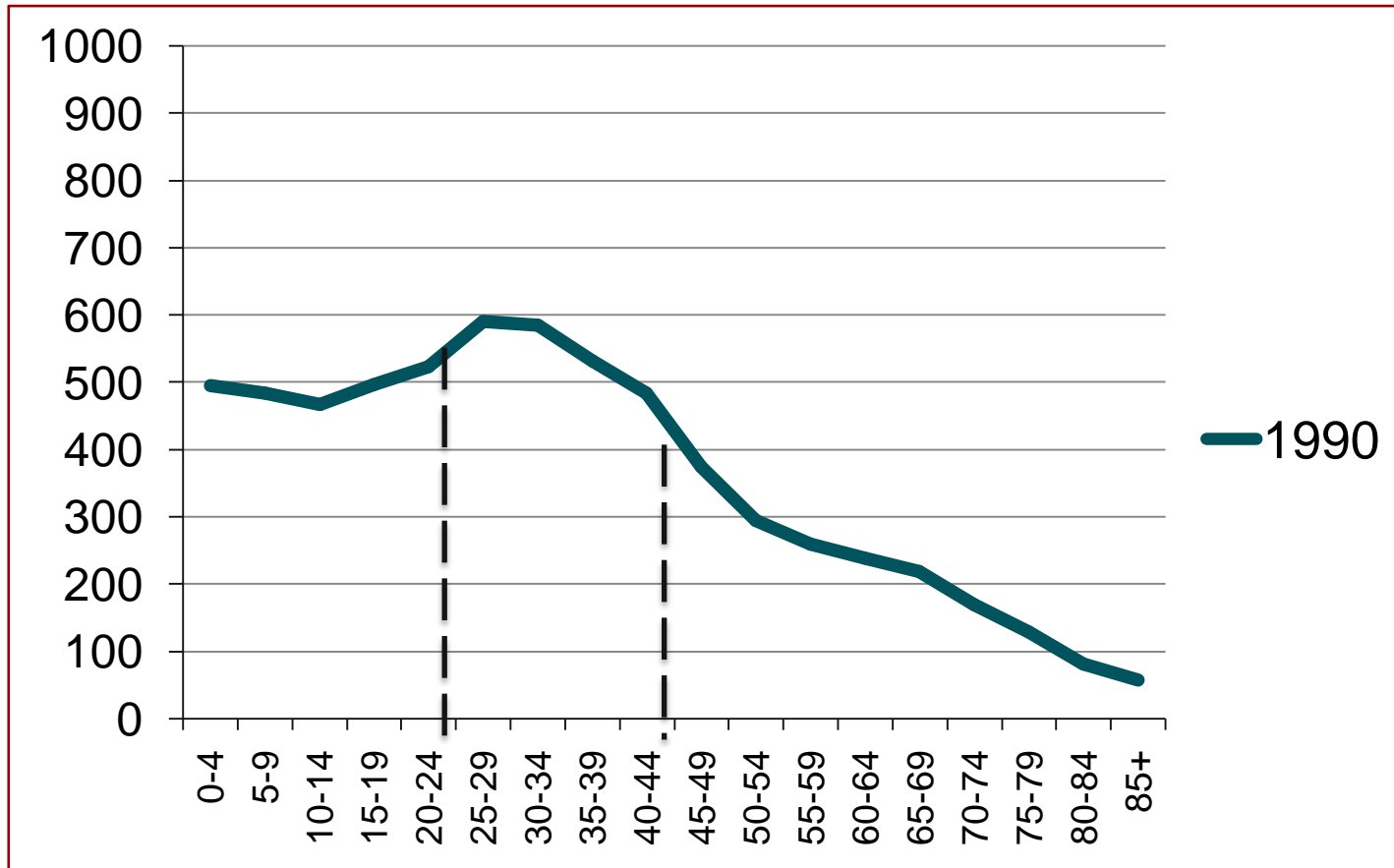
# Mock Projection

	1990	2010
5–24	2.0	2.7
25–44	2.2	2.7
45–64	1.2	2.4
65–80	0.6	0.9

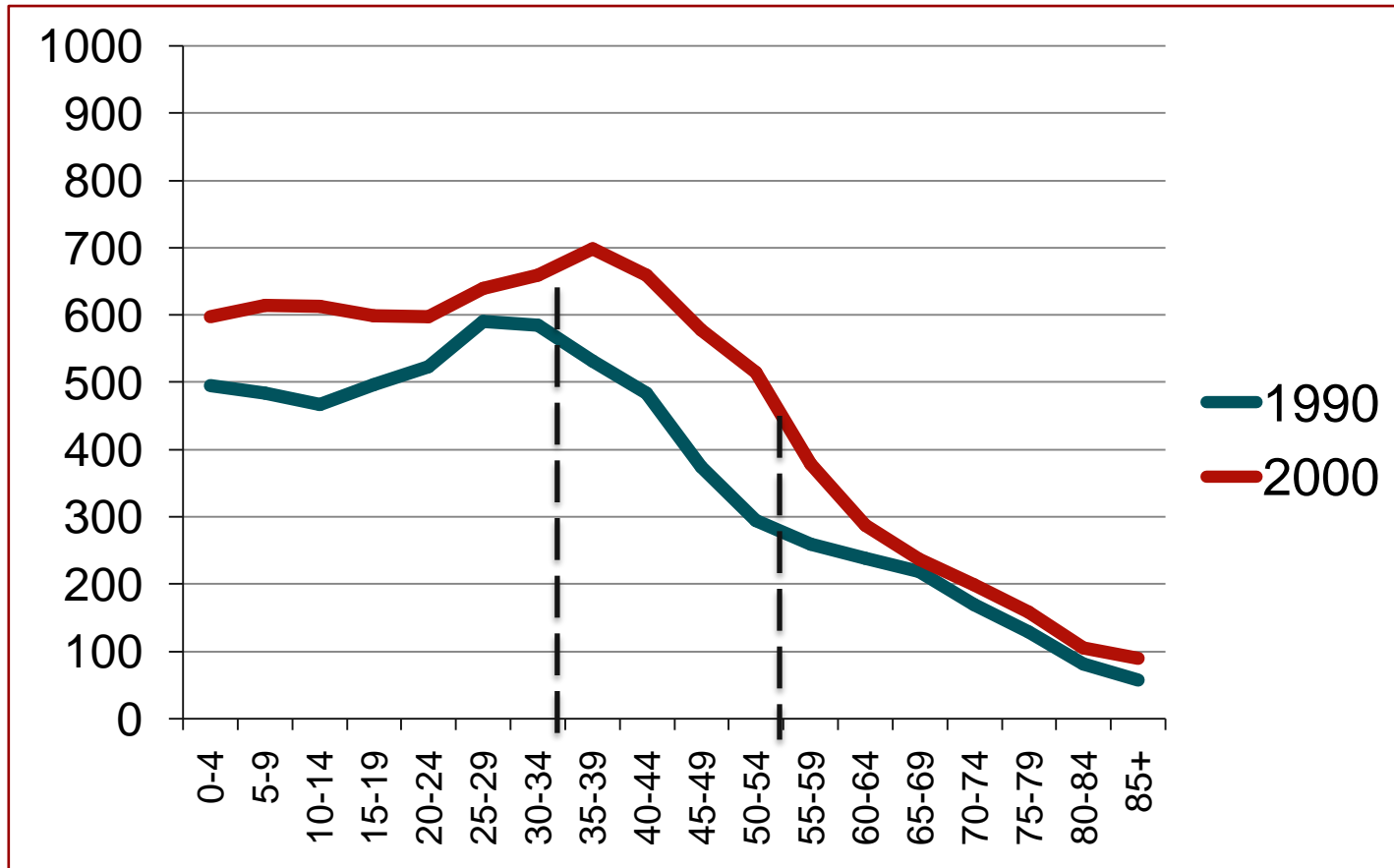
# Mock Projection

	1990	2010	2030
5–24	2.0	2.7	
25–44	2.2	2.7	2.7
45–64	1.2	2.4	2.7
65–80	0.6	0.9	2.4

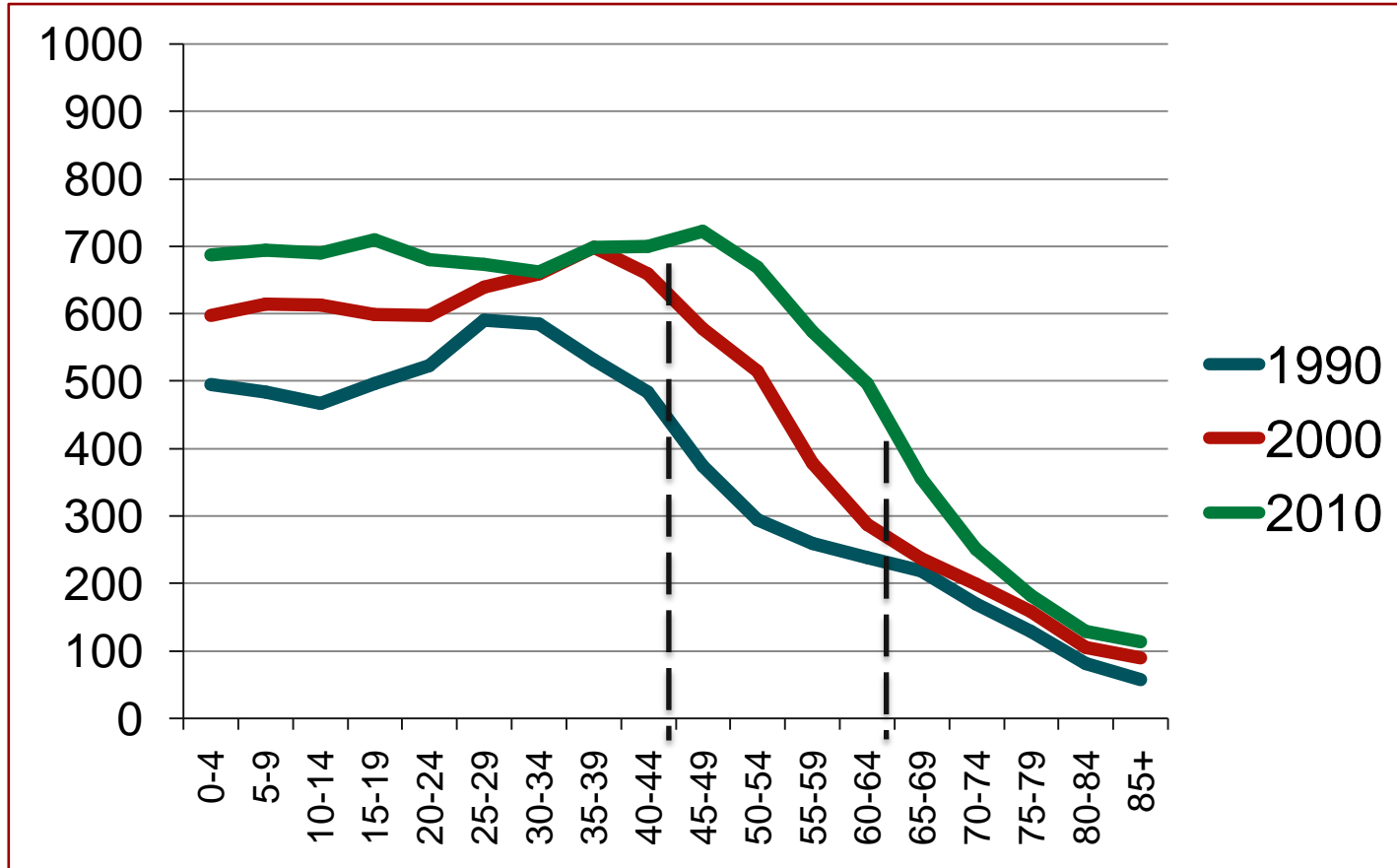
# Baby Boom



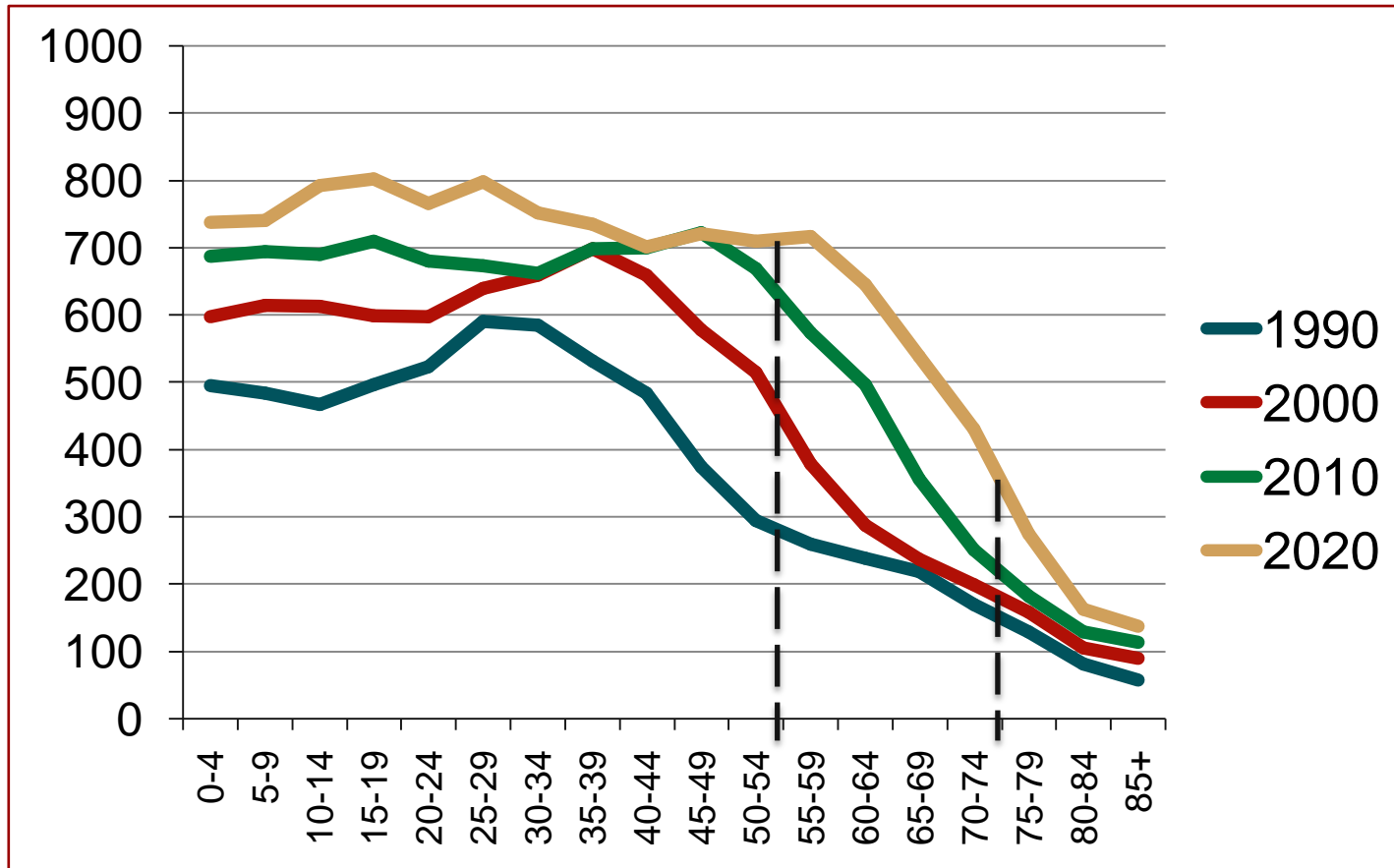
# Baby Boom



# Baby Boom

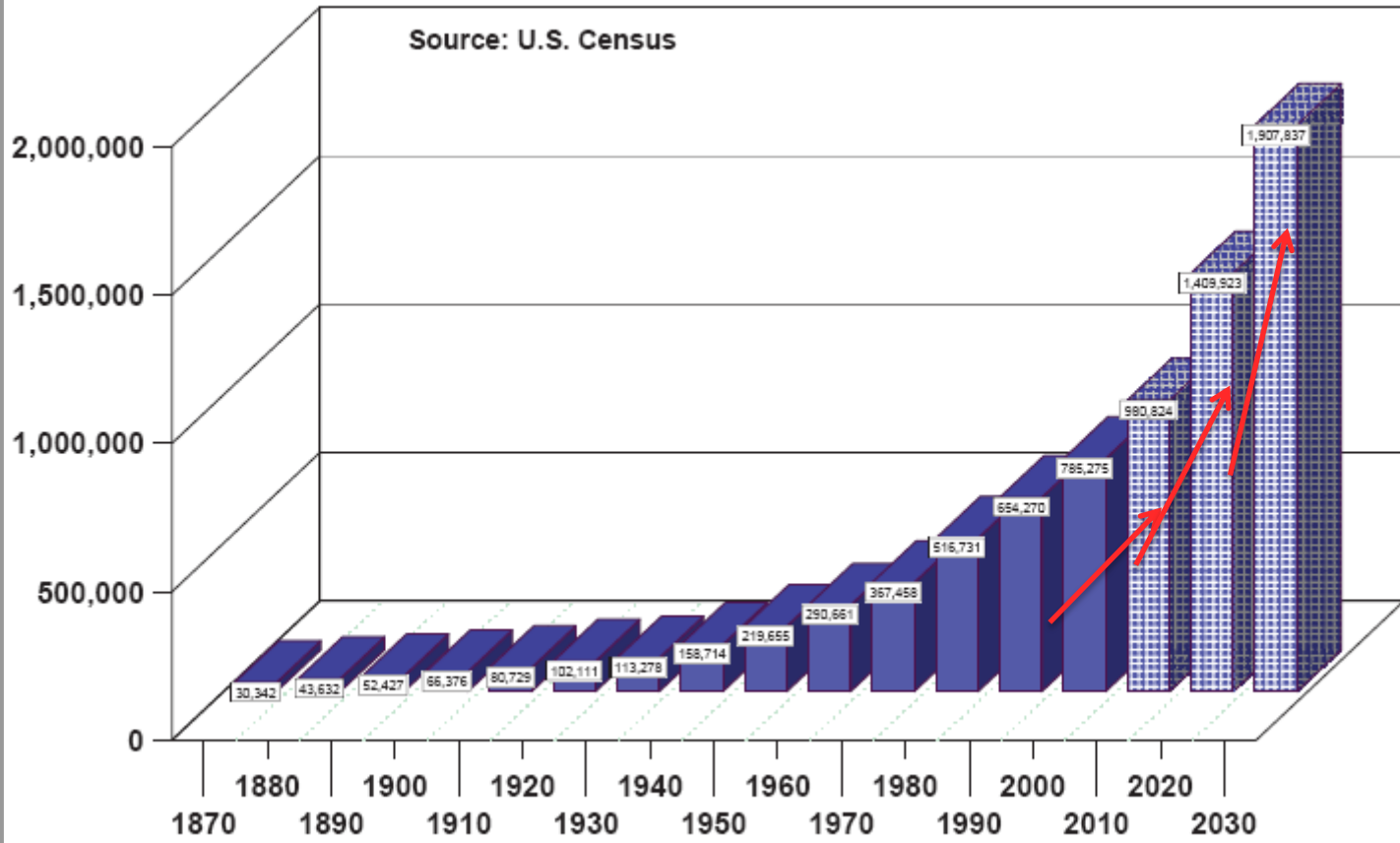


# Baby Boom



# Georgia Population Age 65 And Over

Source: U.S. Census



# Conclusions

Most rapid growth  
among youngest and  
oldest individuals



The middle-aged  
population growing the  
least





# Final Thoughts

- **Demography is destiny.**
- **“The best way to predict the future is to make it.”**  
**—Abraham Lincoln**

# Contact Information

**Matt Hauer**  
**(706) 542-9369**  
**hauer@uga.edu**

**[www.vinsoninstitute.org](http://www.vinsoninstitute.org)**